

CFA News

The Newsletter of the Catskill Forest Association, Inc.
Volume 27, Number 3 - Summer 2009



Emerald Ash Borer



INSIDE THIS ISSUE:



Emerald Ash Borer in NY
Calendar of Events
Super Forestry Component at Cauliflower Festival!
CFA's New Website Launch!
CFA's 2009 Annual Meeting - Deer Management & Fun
CFA's Tree Marking Program





CFA News
Volume 27, Number 3
Summer 2009

Editor: Jim Waters
Published Quarterly

Catskill Forest Association, Inc.
43469 State Highway 28
PO Box 336
Arkville, NY 12406-0336
(845) 586-3054
(845) 586-4071 (Fax)
www.catskillforest.org
cfa@catskill.net

Copyright 2009

The Catskill Forest Association, Inc.

Contents may not be reproduced without permission.

Board of Directors:

Robert Bishop II, *President*, DeLancey
 Susan Doig, *Secretary*, Andes
 David Elmore, *Treasurer*, Davenport Center
 Joseph Kraus, Gilboa
 Seth LaPierre, Delhi
 Douglas Murphy, Stamford
 Jake Rosa, Arkville
 Gordon Stevens, *VP*, Margaretville
 Jeff Wiegert, New Paltz
 Frank Winkler, Andes

CFA Staff

Jim Waters, Executive Director
 Michele Fucci, Office Manager
 Ryan Trapani, Education Forester

Subscriptions: *CFA News* is mailed quarterly to members of the Catskill Forest Association. If you are interested in joining CFA, give us a call, visit our office or fill out and mail in the form on the back cover of this publication. Contact information is located above. Please submit address changes to Michele at the address above.

Cover Photos:

1. Scene up the Dry Brook Valley, Arkville, NY.
2. A picture of the understory at the edge of the field in the larger picture showing only fern growing because of lack of sun and abundance of deer that eat just about everything else. (Come to CFA's annual meeting to learn much more about managing deer damage!)
3. Emerald Ash Borer that is now in NY State!



CFA's chainsaw safety workshop - 5-16-09

Table of Contents:

New Members.....	2
Executive Director's Message.....	3
European Sawfly.....	3
Emerald Ash Borer Is In NY!.....	4 & 5
Calendar of Events	6
Donation of Woodworking Equip. to BOCES.....	7
CFA's new Website Launch!.....	7
CFA's Annual Meeting.....	8 & 9
DEP Woodwalk.....	9
Forestry at Cauliflower Festival.....	10
CFA's Tree Marking Program.....	11
Membership Application.....	Back Cover

New Members

May

Nola Tully – Margaretville
 Robert Stork – Arkville
 Frans & Catherina Stassen – Freehold
 Stephan Kass – Fleischmanns
 Quality Deer Management Association – Highland
 Hackley School – Tarrytown

June

William & Oda Friedheim – Highmount
 Alan Cumming – Roxbury
 Anita Bubaum & Robert Giddis – Harpersfield
 Bruce Kaufmann & Patricia Gottier – Halcottsville
 Yoav Borsule – Olivebridge
 Nicola Cetorelli – Roxbury

July

Arnold & Roslyn Bernstein – Fleischmanns
 Sheldon Lublin – Napanoch

August

Edmund Bennett – Fleischmanns
 Jen Cole – Denver
 Annette Bombarger – Delhi

EXECUTIVE DIRECTOR'S MESSAGE

I hope that you have been enjoying what little summer weather we have had. There is a lot to do outside -- even if it is building an ark! From cutting firewood to hiking, fishing and enjoying being "one" with nature.

We have hosted several workshops. The most recent being a woods tour on a DEP harvest job, directed by Seth LaPierre, a DEP forester. There were lots of Q&A. I think everyone learned a lot and enjoyed the walk.

1. Check out the **NEW CFA WEBSITE!** (www.catskillforest.org) We're very excited about it. There is a "doctor is in" section at the bottom of the home page where anyone can send us an email with a forest health question. We will reply directly to that person via email and if we think the question and answer would be interesting to others, we will add it to the "Blog" section. There are lots of articles available in part to non-members, and in whole to members. We will be adding more items to the store and members will get an automatic 10% discount, once that is set up. Also, newsletters will be made available to members in PDF format so that you can download it and/or print it. Eventually, this may end up being the way most members can receive their newsletter.

Make sure you send Michele the information below via an email. That is the only way you will be able to access all of the information on CFA's web-site and the discounts on store items. Send this information to: cfa@catskill.net:

Name
E-mail Address
Mailing Address
Phone Number

2. This year CFA is the Host of the **NEW FOREST-RY SECTION AT THE CAULIFLOWER FESTIVAL** being held on Saturday, Sept. 26th at the Pavilion behind the grocery store in Margaretville. Make sure you stop by and enjoy the many exhibits available from horse skidding and chainsaw carving to local craftsmen, wildlife agencies, and not-for-profits. See the announcement on Page ten (10).

3. **CFA's ANNUAL MEETING** is Oct. 3rd at the Andes Hotel this year. There will be updates on CFA, stories told by locals and a presentation by the National Quality Deer

Management Association. Deer is becoming a very real problem to all of us in the Catskills when we want to regenerate our forests. See the announcement on page eight (8).

4. We still need help paying for **CFA's new roof!** We have collected \$825 towards the cost of \$15,000. This was a non-budgeted and emergency item and if we are not able to raise the funds, it will result in cut-backs in the services that we are able to provide. **PLEASE send in a contribution**, no matter how small to help us pay for this. We have not held a fundraiser for CFA since we moved into the new office over three years ago.

5. Good News! -- The Governor has signed the "Development Council" legislation into law. It authorizes the Department of Ag and Markets to provide market development and promotion for forest products manufacturing. This will ultimately help you as landowners by creating higher demand for your trees - be them high or low quality. It will also help our forest industry better utilize the vast resource that we have.

6. Even Better News! -- There will be a new market for low-grade trees in the Western part of the Catskills. New England Wood Pellet is in the process of acquiring Norbord in Deposit, NY and converting it into a pellet plant capable of producing 100,000 tons of dry hardwood pellets. We will try to keep you posted.

Naturally, *Jim Waters*



"WHAT'S EATING MY PINE TREES?"

Several members have called in complaining of damage to the needles of their pine trees. The evergreens with long needles - not spruce or fir that have the shorter needles.) One member sent in pictures for identification. This damage was done by the European Sawfly, *Neodiprion sertifer*, which is native to Europe. Feeding by the larval (caterpillar) stage begins on the needle surface, causing the needle to turn brown and wilt. As the larvae mature they begin strip



European Sawfly damage to a red pine.

ping the needles and complete defoliation may occur. This does not usually kill the tree or shrub, as the caterpillars do not feed on the new growth -- but it certainly will stunt the tree's growth, add stress to it and reduce its aesthetic value.



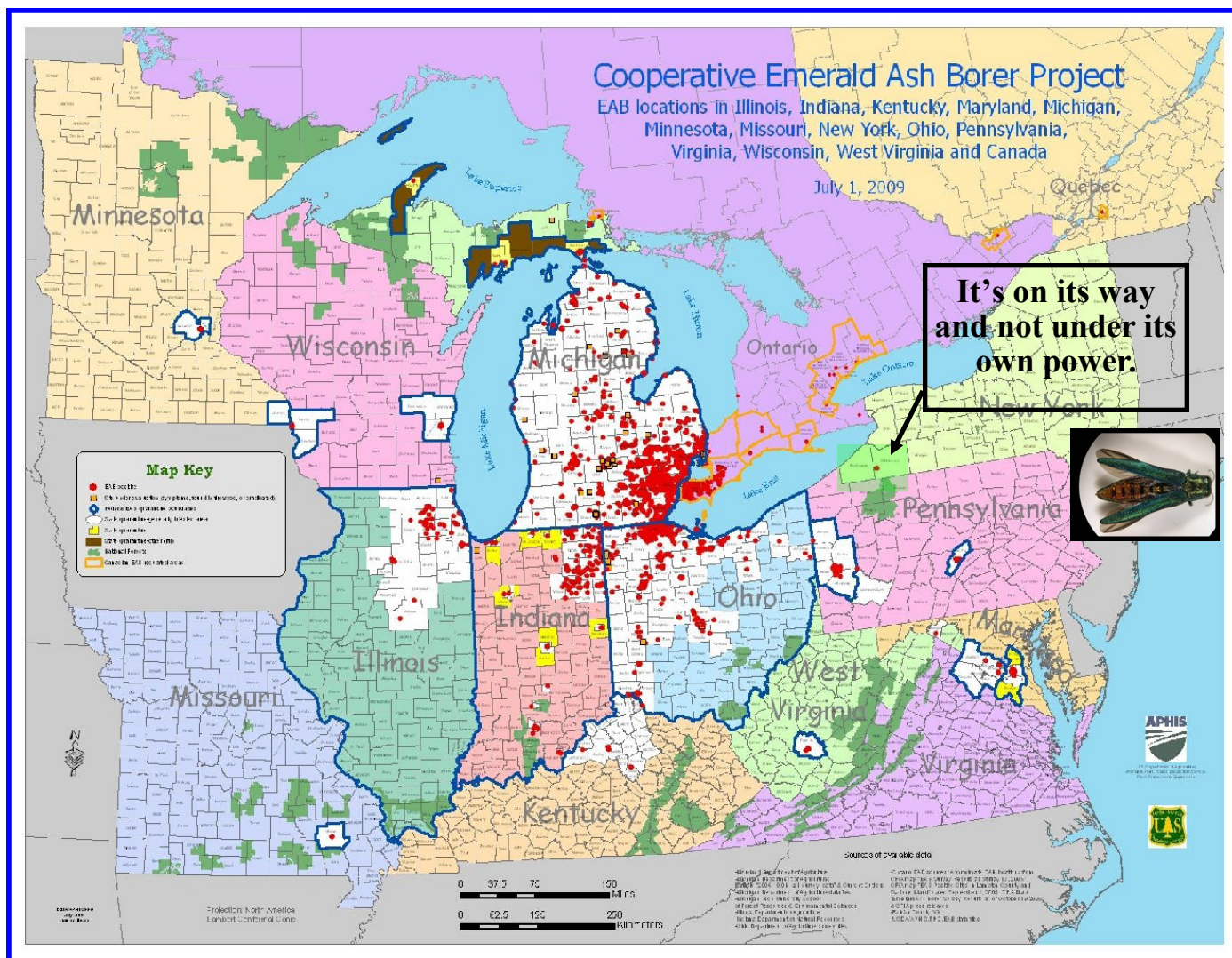
The larval (caterpillar) stage of this insect performs this work. It has a shiny black head and is grayish-green. It has a light stripe down the middle of its back, and a light stripe along each side followed by a dark green stripe running parallel down the length of their body.

The eggs over-winter in slits along the edge of the needle. The hatch-



ing occurs in Early May and the larvae feed until early June. When mature the larvae drop to the ground and spin brown cocoons. In late summer the adults pupate inside the cocoons and emerge as brownish-black and look somewhat like a wasp. This is when they mate and the females in September and October slit the edge of the needle and lay their eggs.

When possible, species more resistant to this pest should be planted. Also, there are several parasites and native birds that feed on the larvae and rodents that eat the pupae in the soil. Often these natural predators are not enough to provide adequate control, so mechanical or chemical measures might be needed. The needles containing over-wintering eggs can be removed and destroyed or colonies of young larvae can be eliminated by removing and destroying the infested branch terminals. As a last resort horticultural oils and insecticidal soaps are effective if used when the sawfly larvae are small.



EMERALD ASH BORER - WHAT IS BEING DONE & HOW TO PREPARE FOR ITS ARRIVAL:

Emerald Ash borer (EAB) is here in New York now. Please don't panic by harvesting all of your ash trees in anticipation. Let's learn from what other states are doing that have been experiencing this infestation - what has been effective & what has not. Ash is not a highly valuable tree and it would not take much to flood what little market we now have for this species.....And, the trees will certainly die if they are cut!

EAB (*Agrillus planipennis* Fairmaire) is a non-native insect that will infest and kill any type of ash tree (*Fraxinus* spp.). It is believed that it was introduced to North America from eastern Asia in ash wood used for stabilizing cargo in ships or for packing or crating heavy consumer products. It arrived as early as 1990, but went undetected until its population built up to damaging levels in Detroit, MI and Windsor, Ontario in June of 2002.

It has since been discovered in 12 more states. -- Ohio, Maryland and Virginia in 2003, Indiana in 2004, Illinois in 2006, Pennsylvania and West Virginia in 2007, Wisconsin and Missouri in 2008 and Kentucky, Minnesota and New York in 2009.

Almost without exception each state started out with an eradication program of cutting down every ash tree within 1/2 mile of any discovered infestation. The idea behind this was that by cutting down all ash trees within the distance of the natural spread of the insect, and chipping them up to less than an inch to destroy the larvae living beneath the bark, that it would stop its natural spread. This can help the natural spread if done correctly in small isolated outbreaks. Remember that this insect is in the twigs as well as small branches and trunks. This requires whole tree harvesting and chipping and a safe way to dispose of the material such as wood-burning facilities. This is an expensive program, hard to orchestrate with many small ownerships and is only somewhat effective. With all of the absentee land-owners in the Catskill region it would even be harder. It is not enough to stop EAB completely. It will continue to spread - mostly by the transport done by humans.

The beetle does not spread quickly on its own. Most states are putting their primary focus on preventing the movement of potentially infested articles such as firewood, nursery stock, wood chips, pulpwood and logs. This is done by set-

ting up quarantines to effectively eliminate the transport of potentially infested material out of the area where the insect was discovered. Typically the entire county in which it is discovered is included and if it is found within a mile or so of an adjoining county, that one is also included.

Michigan, Ontario, Ohio, Maryland, Indiana and Illinois are all not using federal funds any longer to eliminate every ash tree, infested or not within a half mile radius of the discovery site. Pennsylvania still has a policy of doing so, but if the beetle spreads, (and it most likely will) it is doubtful that they will continue.

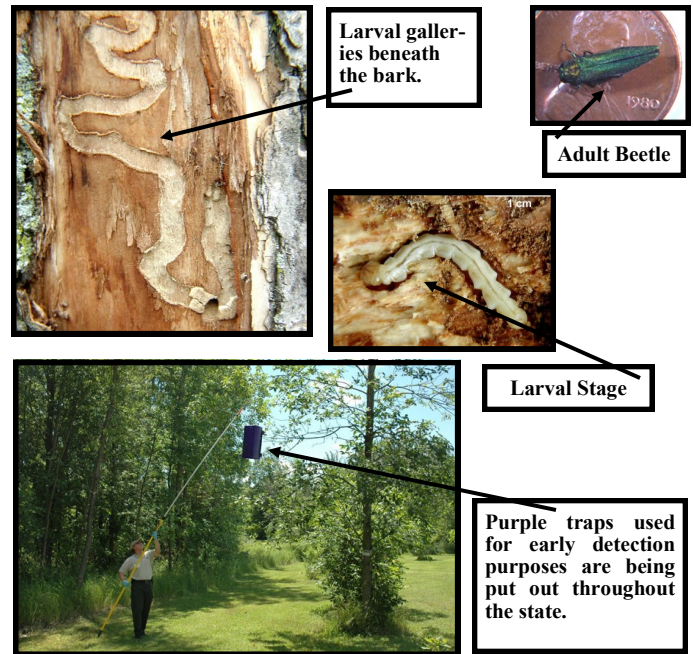
In mid June of 2009 New York made its first discovery of EAB in the town of Randolph, Cattaraugus County. An entomologist made the sighting just off Exit 16 of State Route 17/I-86.

Commissioner Grannis said in a press release announcing the discovery, "This is yet another wake-up call for all New Yorkers that invasive species pose a grave threat to the health of our natural resources and ecosystems, and ultimately, our economy. Tough but practical measures, such as quarantines, firewood regulations, public education and other regulatory actions will continue to be needed if we are to limit the damage from EAB and other invasives." No-one has said what the "other regulatory actions" might be or if any are contemplated.

The DEC and Department of Ag & Markets almost immediately announced a quarantine. New York's order prohibits the movement of regulated articles within and beyond Cattaraugus and Chautauqua counties without certification or compliance agreements issued by DAM. The state order also restricts the movement of the regulated wood products into or through the quarantine district by requiring several provisions including, but not limited to documentation listing the origin and destination of shipments, and prohibiting transporters from unnecessarily stopping while traveling through the quarantine district. The full order is posted on the DEC website.

As a basic requirement of the intrastate regulation, all individuals, companies or facilities handling ash timber products and/or processing other uncertified green ash products, or chips, bark and firewood of any species, will be required to enter into a **compliance agreement** with either NYS DAM or APHIS. A compliance agreement is a written agreement between a regulating agency and a person handling or receiving regulated articles which authorizes the restricted movement, processing, handling or utilization of these articles.

New York has begun a full-scale education program, restricted the movement of firewood and implemented early detection and quarantine strategies. These are the same tactics that states which have been dealing with EAB, have found to be the most effective. If NYS does decide to remove trees they will be doing it with the proper authority to do so and any attempt to stop them in court will be costly and



most likely will be unsuccessful. But, again, most states have decided that it is too costly and not very effective on a large scale.

The fact is, the insect is here and work is being done to develop a biological control. In the mean-time all states' efforts are to slow the spread of EAB. The biggest culprit in its spread is the human.

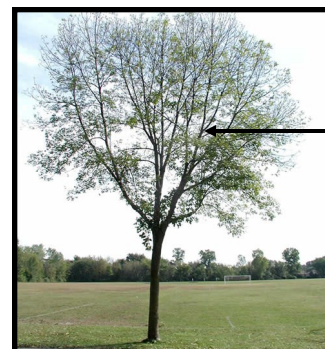
Landowners should not make knee-jerk reactions to this situation. There are many things to consider before taking any action. The two web sites that are mentioned in this article is the best place to start -- along with calling CFA!

(845-586-3054)

The DEC's web site is a very good way to follow what the state is doing about this problem.
www.dec.ny.gov/animals/7253.html



Whole-tree chipper being used in urban/commercial area.



Ash tree with 60% dieback. --
 This is usually when people notice that there is a problem.

Another very good web site to visit on this subject is part of a multinational effort in Michigan, Illinois, Indiana, Kentucky, Maryland, Minnesota, Missouri, New York, Ohio, Pennsylvania, Virginia, West Virginia, Wisconsin, Ontario and Quebec to bring you the latest information about emerald ash borer.

www.emeraldashborer.info

Calendar of Events For 2009



(August 26th, 7:00pm – 9:00pm): **Crop Tree Management Workshop** -- Which trees should be cut? Which should be left? It depends! Learn how to enhance the health and benefits your trees and forest can provide by practicing Crop Tree Management. Jeffersonville Public Library at 19 Center St., Jeffersonville. To pre-register or for more information call CFA @ (845) 586-3054.



(September 12th, 9:00am – 3:00pm): **Deer & Habitat Field Day** -- Attention Deer Hunters, Landowners & Anyone Interested! Hudson Valley Branch of the Quality Deer Management Association invites us to attend a FREE Deer & Habitat Field Day. Basic food plot principles and property/wildlife plans, Forestry for Wildlife, alternative buck harvest strategies and deer harvest & herd data collection. Ruby Rod & Gun Club, 1223 Main St., Ruby, NY 12475. Pre-registration is mandatory! Call Charlie Fiscella at 845-883-4117.



(September 20th, TBA): **Apple Tree Pruning & Cider-Making** -- Properly pruned fruit trees grow vigorously, efficiently allocating the sun's energy to making delicious and abundant fruit. Ellenville public Library & Museum at 40 Center St., Ellenville. The first half will cover pruning while the other will teach how to make your own cider. To pre-register or for more information call CFA @ (845) 586-3054.



Cauliflower & Forest Festival (September 26th) The 1st Annual celebration of our region's forests is a major event. The Annual Cauliflower Festival this year -- located at the pavilion behind the new Freshtown Market, in the village of Marquette, Delaware County. The purpose of this event is to foster an appreciation for the many benefits our **Working Forests and Farms** provide for our local **communities and society**. There will be many forestry demonstrations and exhibits. Free Admission! (See pg. 10 for more information.)



(October 3rd, 9:30am – 3:30pm): **Catskill Forest Association's Annual Meeting** -- An opportunity to share ideas and stories with your peers. Hear about what CFA has been up to and some of your organization's changes. Brief Update on **Logging** with open discussion session. Learn about one of the largest threats to regenerating the Catskill Forest - **DEER**. Support CFA by getting involved in the auction. And enjoy the excellent setting of the Andes hotel, entertaining story-tellers, superb dining and Great Fun! (More on pg. 8 & 9.) Pre-Registration and Pre-Payment is a MUST. \$35/person, \$65/couple -- Call Michele at 845-586-3054.



(October 20th, 7:00pm – 9:00pm): **Apple Tree Pruning & Cider-Making** -- Properly pruned fruit trees grow vigorously, efficiently allocating the sun's energy to making delicious and abundant fruit. The first half will cover pruning while the other will teach how to make your own cider. Callicoon Library at 11 Lower Main St., Callicoon. To pre-register or for more information call CFA @ (845) 586-3054.



(October 21st, 7:00pm – 9:00pm): **Apple Tree Pruning & Cider-Making** -- Properly pruned fruit trees grow vigorously, efficiently allocating the sun's energy to making delicious and abundant fruit. The first half will cover pruning while the other will teach how to make your own cider. Jeffersonville public Library at 19 Center St., Jeffersonville. To pre-register or for more information call CFA @ (845) 586-3054.



(October 22nd, 7:00pm – 9:00pm): **Apple Tree Pruning & Cider-Making** -- Properly pruned fruit trees grow vigorously, efficiently allocating the sun's energy to making delicious and abundant fruit. The first half will cover pruning while the other will teach how to make your own cider. Narrowsburg Library at 198 Bridge St., Narrowsburg. To pre-register or for more information call CFA @ (845) 586-3054.



(October 24th, 9:00am – 12:00pm): **Firewood Management Workshop** -- Learn the basics about firewood! We will cover choosing the right trees to cut, harvesting techniques, species ratings, transportation, processing, and heating techniques. Outdoor wood furnace & fireplace distributors will also be available for information and advice. To be held at CFA's office at 43469 State Hwy 28, Jeffersonville. To pre-register or for more information call CFA @ (845) 586-3054. \$5 CFA members \$10 non-members.



(November 7th 9:00am – 3:00pm): **Chainsaw Safety Workshop -- Game Of Logging** -- The chainsaw can be a valuable tool in managing a forest. However, safety precautions and efficiency must first be understood. Learn basic safety skills and techniques for properly felling trees. Level 1 introduces participants to open face felling, personal protective equipment, chainsaw safety features, reactive forces, bore cutting, pre-planning the fell, and understanding hinge wood strength. Provide your own chainsaw, helmet, leather boots, chaps, eye protection, ear muffs or plugs, and dress for the weather. Bring a lunch and enough water for the day. Class is limited to 15 participants. (Location TBA, near Arkville) Pre-registration is a must and for more information call CFA @ (845) 586-3054. \$135 CFA members \$150 non-members, class limit **10**, bring your lunch, chainsaw & gear.

**Check out our website at www.catskillforest.org
for a current listing of the 2009 Events!**



Jim Waters from CFA, on left, shaking hands with Dick Metzger, BOCES carpentry teacher, on right (taller man) and Katie Allen, building principal of BOCES in center.

CATSKILL FOREST ASSOCIATION DONATES WOOD-WORKING TOOLS TO DCMO BOCES --

The Catskill Forest Association, Inc. (CFA) delivered over \$6,115 in new wood carpentry power equipment to the Delaware-Chanango-Madison-Otsego Board of Cooperative Education Services (BOCES) on Tuesday, June 23rd. DCMO BOCES is a regional educational agency providing services in partnership with 16 local school districts. It is one of 37 across New York State working in collaboration with our local school districts to offer programs to students and teachers, as well as administrators, and the community.

Katie Allen, building principal at the Robert W. Harrold Education Campus (607-865-2500) said that the Carpentry Program does a lot of work for Non-profit organizations. Most recently they built eight kiosks for the DEP on Canonsville Reservoir as part of their three year pilot recreational boating program. Students also built a storage shed for the town of Walton, and four dugouts and two sheds for Franklin Central School District. "These students need to learn about citizenship. Working in communities for non-profit organizations is a good way to learn," said Dick Metzger, Building Trades and Carpentry teacher.

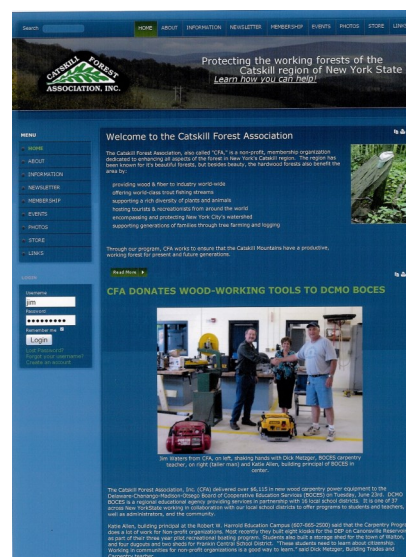
107th District, NYS, Assemblymember Clifford W. Crouch confirmed "We are very appreciative of this donation of equipment by The Catskill Forest Association. It is important to have up-to-date quality equipment for teaching woodworking skills. This equipment will not only aid in developing skills but will increase the appreciation of the beauty and utility of our forest products."

"CFA is the Catskill Region's leading advocate for the forest. CFA serves everyone who loves our forests, including landowners, foresters, timber harvesters, the forest products industry, students and the general public" says Jim Waters, executive director. "CFA helps to ensure a beautiful, fun and produc-

tive forest for all and this donation is in response to the increasing financial problems that the area is feeling. It's CFA's hope that these tools will provide help to BOCES in providing people a new trade in woodworking that will, in turn, help those individuals obtain jobs, put bread on their tables and utilize the wonderful renewable resource that abounds us in the Catskill Region. Additionally, we may be able to keep a few of our children close to their home."

Bob Bishop, President of CFA's Board of Directors commented "I am pleased that CFA was able to help out this fine program. We are looking forward to visiting the school next fall while woodworking classes are in session. BOCES also has 150 acres of forest that they manage for timber and maple sugar."

**NEW CFA WEBSITE: www.catskillforest.org
CHECK IT OUT!**



If you have not received an email with your user ID and password or if you have lost it please send an email to: cfa@catskill.net with the following information:

Name
e-mail address
Home Address
Telephone Number

Without this information you will not be able to access the areas open to members only or purchase from the store with the member discount.

Soon we will be posting the Newsletters there and adding more items to the store. We need to crawl a little before we can run.

CFA's 27th ANNUAL MEETING

Date: October 3, 2009
Time: 9:30am - 3:30pm
Place: Andes, NY

WHY YOU SHOULD GO:

- An opportunity to exchange ideas and stories with your peers
- Hear about what CFA has been up to and some of your organization's changes
- Brief Update on **GAS DRILLING** with open discussion session
- Learn about one of the largest threats to regenerating the Catskill Forest - **DEER**
- Support CFA by getting involved in the auction
- Enjoy the excellent setting of the Andes hotel, entertaining story-tellers, superb dining (menu on back) and Great Fun!

Pre-registration & Payment Mandatory!

Don't let the deadline go by!
Limited Seating -- 100!
Just \$35/person or \$65/couple
Send in the registration to arrive at CFA's
office --
NO LATER than Sept. 21st!!!

The Setting:

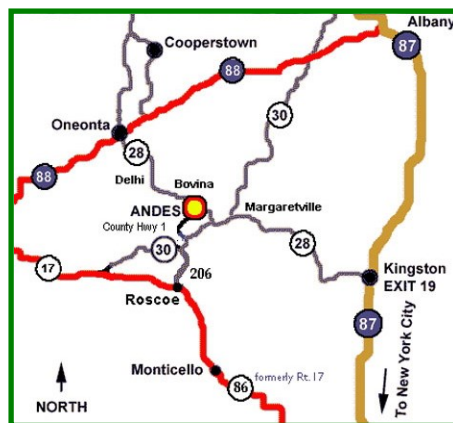
The Andes Hotel
110 Main Street
Andes, New York

13731

www.andeshotel.com



DIRECTIONS:



From NY Interstate 87:

Get off at Exit 19 (Kingston); you will enter the traffic circle and make the first possible right onto "Route 28 (West) Pine Hill". Remain on Route 28 for approximately 50 miles. Follow the rivers such as the Esopus and east branch of the Delaware River until you see the sign, "Andes Welcomes You" on the right, and the Andes Hotel, will be one mile ahead on the left.

Directions from the road formerly known as Route 17 (now Route 86):

through Sullivan County to Roscoe, where you exit and go north on Route 206 until you reach the Pepacton Reservoir. Go right around the reservoir until you see the bridge, crossing over here. At the end of the bridge take the left, driving up County Highway 1 (Tremperkill Rd.) right into town.

What is Quality Deer Management?

Quality Deer Management is a management philosophy/practice that unites landowners, hunters, and managers in a common goal of producing biologically and socially balanced deer herds within existing environmental, social, and legal constraints. This approach typically involves the protection of young bucks (yearlings and some 2.5 year-olds) combined with an adequate harvest of female deer to maintain a healthy population in balance with existing habitat conditions and landowner desires. This level of deer management involves the production of quality deer (bucks, does, and fawns), quality habitat, quality hunting experiences, and, most importantly, quality hunters.



A successful QDM program requires an increased knowledge of deer biology and active participation in management. This level of involvement extends the role of the hunter from mere consumer to manager. The progression from education to understanding, and finally, to respect; bestows an ethical obligation upon the hunter to practice sound deer management. Consequently, to an increasing number of landowners and hunters, QDM is a desirable alternative to traditional management, which allows the harvest of any legal buck and few, if any, does.

QDM guidelines are formulated according to property-specific objectives, goals, and limitations. Participating hunters enjoy both the tangible and intangible benefits of this approach. Pleasure can be derived from each hunting experience, regardless if a shot is fired. What is important is the chance to interact with a well-managed deer herd that is in balance with its habitat. A side benefit is the knowledge that mature bucks are present in the herd - something lacking on many areas under traditional deer management. When a quality buck is taken on a QDM area, the pride can be shared by all property hunters because it was they who produced it by allowing it to reach the older age classes which are necessary for large bodies and antlers.



Logging Job Tour on NYC DEP Land

On Saturday, August 8th, NYC DEP's Forester and CFA Board Member Seth LaPierre, held a woodswalk for CFA near the Pepacton Reservoir in the Town of Andes. Both members and non-members of CFA were in attendance including some loggers from Hudson Valley who were interested in forest operations on DEP lands.

The primary focus of forest management on city land is water quality and aesthetics. It is not to provide forest products for the forest products industry or make as much income as possible. Unlike other forests in the region, the city lands near the Pepacton are more typical of forests found to the east near the Hudson Valley. Much of the forests are dominated by red oak, red maple, white ash and black cherry. In fact some areas are heavy with chestnut and white oak with scattered small American chestnut, perhaps indicating a Native American disturbance legacy from fire.

The purpose of the woodswalk was to show interested forest owners the on-goings of an active logging job. On our walk, Seth focused on the decision-making process that goes into choosing which trees should stay and which are to be harvested in order to meet a variety of management goals & objectives. Some areas were harvested heavily in order to enhance regeneration that was already present. Other areas were thinned less heavily in order to release better quality standing trees from competition so that they could grow faster and more vigorously. Like any logging job, the importance of a good working relationship between the Forester and Logger is paramount in realizing good forest management. Both Forester and Logger must be on the same page and know where each stands. It is important to include precise language in the logging contract so as to minimize any misunderstandings.

Seth described how forest roads and skid trails were laid out. Skid trails are used to skid out trees to a landing along a forest road where they are cut into various products and then trucked away. Many of the red oaks on this forest have been dying or are dead. The cause is unknown, but Seth believes the Two-Lined Chestnut Borer to be the culprit. As in other forests in the Catskill Region, regeneration of a variety of tree species that can outgrow New York and hay-scented fern is always a challenge. Deer browse enhances the growth of fern since they do not like it as compared to the sugar maple and red oak regeneration.

In the future, CFA will be offering more of these woodswalks on actively managed forestlands. This is a great way to familiarize landowners with tree harvesting and some of the temporary impacts that ensue. To many, these impacts seem like they will last forever, when instead they are really temporary aesthetic impacts that can have long-lasting beneficial impacts upon residual stand health, growth, regeneration, habitat enhancement and stronger economic sustainability that provides a local source for both jobs and wood products. Look out for our next logging job tour.



BUFFET MENU

Herb Roasted Chicken, Little's Farm Sweet Corn Fricassee

Bramley Mountain Farm's Texas Beef Chile

Thorn Ridge Farm's Tomato & Mozzarella, Fresh Basil

Grilled and Roasted Thorn Ridge Farm's Late Harvest Squashes, Balsamic Syrup

Fall Vegetable Pasta Primavera, Roasted Garlic, Olive Oil, Parmesan Cheese

Bread Basket

"Darview Farms" Maple Cookies

Beverage Buffet
Included during entire day
Coffee & Tea
Assorted Sodas
Ice Tea
Water



7th Annual Cauliflower Festival

(September 26th 10am – 4pm / Margaretville village park)



SPECIAL NEW FEATURE **CATSKILLS FORESTS & WOOD PRODUCTS TENT**

Hosted by the Catskill Forest Association & Sponsored by the WAC Forestry program



Horse-Log Skidding Demonstration
Saw-Mill Demonstration
Firewood Processor Demonstration
Chainsaw Carving



Catskill Forest-Based Businesses:

Wood Products:

Gary Meade of Margaretville's Fruitful Furnishings will be making his premier showing of unique functional art home furnishings: Curved dining room tables; coffee tables; cider mill press base harvest table; hollow hemlock tree pantry & many other surprises!



Manifold Design - Custom Wood Furniture and Accessories (Rick Pereira)
American Beauty Art - Wood Turnings (Bruce McCandless)
Bears Wood Products - Custom Sawing, logging & Firewood (Brian Berentsen)
Harnett Designs - chainsaw sculptures, Signs & Custom Furniture (Brian Harnett)
Horse Logging & Timber Stand Improvement (Lewis Peck)
Apple Cider Making Demonstration (CFA)
Maple Syrup (CFA)



Wood Heat:

Hawken Outdoor Wood Boilers
Tinder Box Wood & Corn Stoves



Equipment Dealers:

Catskill Rentals - Husquavarna Chainsaws, Etc. (Hubbell Brothers)
Hud-Son Equipment - Firewood Processors



Outreach:

Catskill Forest Association
Cornell Cooperative Ext. Agro-Forestry Program
Delaware County Soil & Water Conservation District
NY Forest Owners' Association
Watershed Agricultural Council's Forestry Program



Hiking:

Catskill Mountain Club

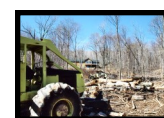
State Agencies:

NYS DEC Lands & Forests
DEC Invasive Insects - Firewood Program & Recent Regulations



Hunting:

Wild Turkey Federation
NYS Trappers Association
Quality Deer Management Association



Historical Society:

Maple Sugaring (Fairbairn Exhibit)



CFA Tree Marking Program!

This is a great way to get an area marked that will provide you and others with firewood as well as improve the health of your forest. You are welcome to join us during the marking to learn how to do it yourself. This could save you money down the road as it will sharpen your understanding of forest management and you will be developing your own tree selection skills. Thinning out the forest will make it more resistant to insects and disease, a better water filter, better wildlife habitat and increase the value of the timber.



DETAILS:

1. You must be a CFA member.
2. An "on-site-visit" fee of \$100 plus mileage will be charged for selecting, designating on the ground the area to be marked, and determining the acreage to be included.
3. After reviewing the forest management plan (if there is one) and taking into account the landowner(s)' objectives, a prescription for that stand will be recommended by the representative and the marking guidelines agreed upon by both the representative, the landowner(s)' forester (if there is one) and the landowner.
4. A maximum of 10 acres will be marked for each landowner in any one calendar year.
5. A fee of \$45 per acre will be charged for the marking.
6. \$15 of this \$45 can be claimed as a tax deductible contribution to CFA, a 501-c-3 not-for-profit organization.
7. The trees marked will be the trees that are considered "crop" trees (These are the trees that are the "keepers".) They will be marked by tree-marking paint at or just below eye height, most of the way around the bole of the tree, and on the stump.
8. It will then be up to the landowner to remove or kill all of the trees without paint. In most cases these trees will not be useful for anything but firewood. There may be an occasional saw-log tree, but unless there are a sufficient number of them, it will not be worth-while to have them delivered to a mill. The goal with this program is to improve the forest by removing the "weed trees". In some cases the trees can be left as fertilizer and wildlife habitat.
9. In the case that the landowner does not want to do the work themselves, a list of professionals will be given to them by CFA to contact in order to have the work done.
10. There is a limited amount of this we can get to, so sign up soon! Just fill out the application below and mail it in. We will call to schedule.



A thinning typically removes about 4 to 5 cords per acre. If you had 10 acres marked, that would be about 45 cords of firewood being made available to you! That means that for an on-site fee and somewhere around \$10/cord you would get a rare and valuable educational experience along with the wood marked by a professional forester from CFA.



CFA TREE MARKING APPLICATION

CFA is holding several special programs in chainsaw safety and use for landowners. (See the Calendar of Events in this issue.)

Name _____

Address of Property _____

Email address _____ Date _____

Phone Number and best time to call, where you can be reached during the weekday _____



PO Box 336
Arkville, NY 12406

MEMBERSHIP APPLICATION

I believe in enhancing the quality of the forest land in the Catskill Region through proper forest management.
To that end, I am interested in joining the Catskill Forest Association and supporting its efforts.

Name _____

Mailing Address _____

Phone #: _____ E-mail: _____

Membership Categories (Select the level & if you'd like, make an additional donation):

Membership	\$50 + \$ _____
Contributing	\$75 + \$ _____
Business / Supporting	\$100 + \$ _____
Supporting	\$150 + \$ _____
Sustaining	\$250 + \$ _____
Benefactor	\$750 + \$ _____

Do you own land in the Catskill Region? Yes _____ No _____

Property address: _____

Telephone #: _____ County: _____

Total acres: _____ Forested acres: _____ Pond Y / N Stream Y / N River Y / N

Would you like a CFA forester to come to your property and spend 3 hours walking your forest, making suggestions and giving you impartial and confidential advice? (It just costs \$100 plus our mileage to do so.) Y / N
(If so we will call you to schedule an appointment.)

Amount enclosed \$ _____

All membership dues and donations are fully tax deductible to the extent allowed by law. A copy of the most recent financial statement filed with the New York Department of State is available upon request.